



LEASEHOLD

House - Mid Terrace

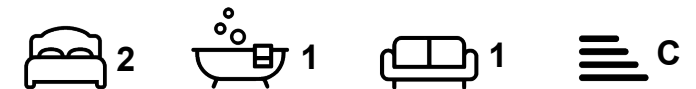
WOODSEATS ROAD, SHEFFIELD, S8

Asking price

£199,950

FEATURES

- Beautifully modernised Victorian terrace with retained period character
- Elegant interiors with warm wooden flooring throughout
- Two well-proportioned double bedrooms
- Larger private south-west facing garden, ideal for entertaining



HIGHGATES
SALES & LETTINGS

2 Bedroom House - Mid Terrace located in Sheffield

An Elegant Two-Bedroom Victorian Terrace with South-West Facing Garden

Situated on one of the area's most consistently popular roads, this beautifully presented two-bedroom Victorian terrace offers a thoughtful blend of period character and contemporary comfort. Stylishly modernised yet rich in retained original detail, the home feels both timeless and effortlessly liveable.

From the moment you step inside, there is an immediate sense of warmth and authenticity. Wooden floors run throughout the ground floor, adding texture and depth while complementing the property's original features. The interiors have been carefully curated to feel calm, cohesive and inviting; a home designed as much for everyday ease as it is for entertaining.

Upstairs, two well-proportioned bedrooms and a bathroom provide elegant accommodation, ideal for professionals, couples or those seeking a refined first home. The overall presentation is turn-key; this is a house that can be enjoyed from day one.

Call us on

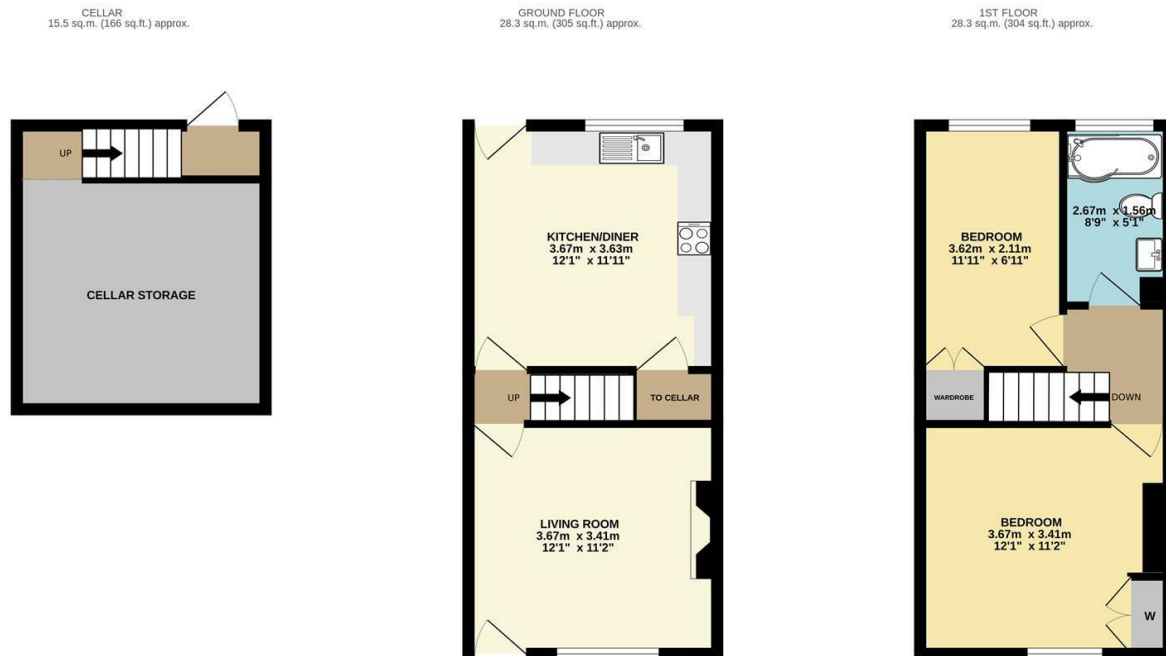
0114 312 4994

info@highgatesstates.co.uk

www.highgatesstates.co.uk

Council Tax Band

A



TOTAL FLOOR AREA: 72.1 sq.m. (776 sq.ft.) approx.
Measurements are approximate. Not to scale. Illustrative purposes only
Made with Metropix ©2026



Energy Efficiency Rating		Current	Potential
<i>Very energy efficient - lower running costs</i>			
(92 plus)	A		
(81-91)	B		81
(69-80)	C	73	
(55-68)	D		
(39-54)	E		
(21-38)	F		
(1-20)	G		
<i>Not energy efficient - higher running costs</i>			
England & Wales		EU Directive	
		2002/91/EC	

Agents Note: Whilst every care has been taken to prepare these particulars, they are for guidance purposes only. All measurements are approximate and are for general guidance purposes only and whilst every care has been taken to ensure their accuracy, they should not be relied upon and potential buyers are advised to recheck the measurements.

